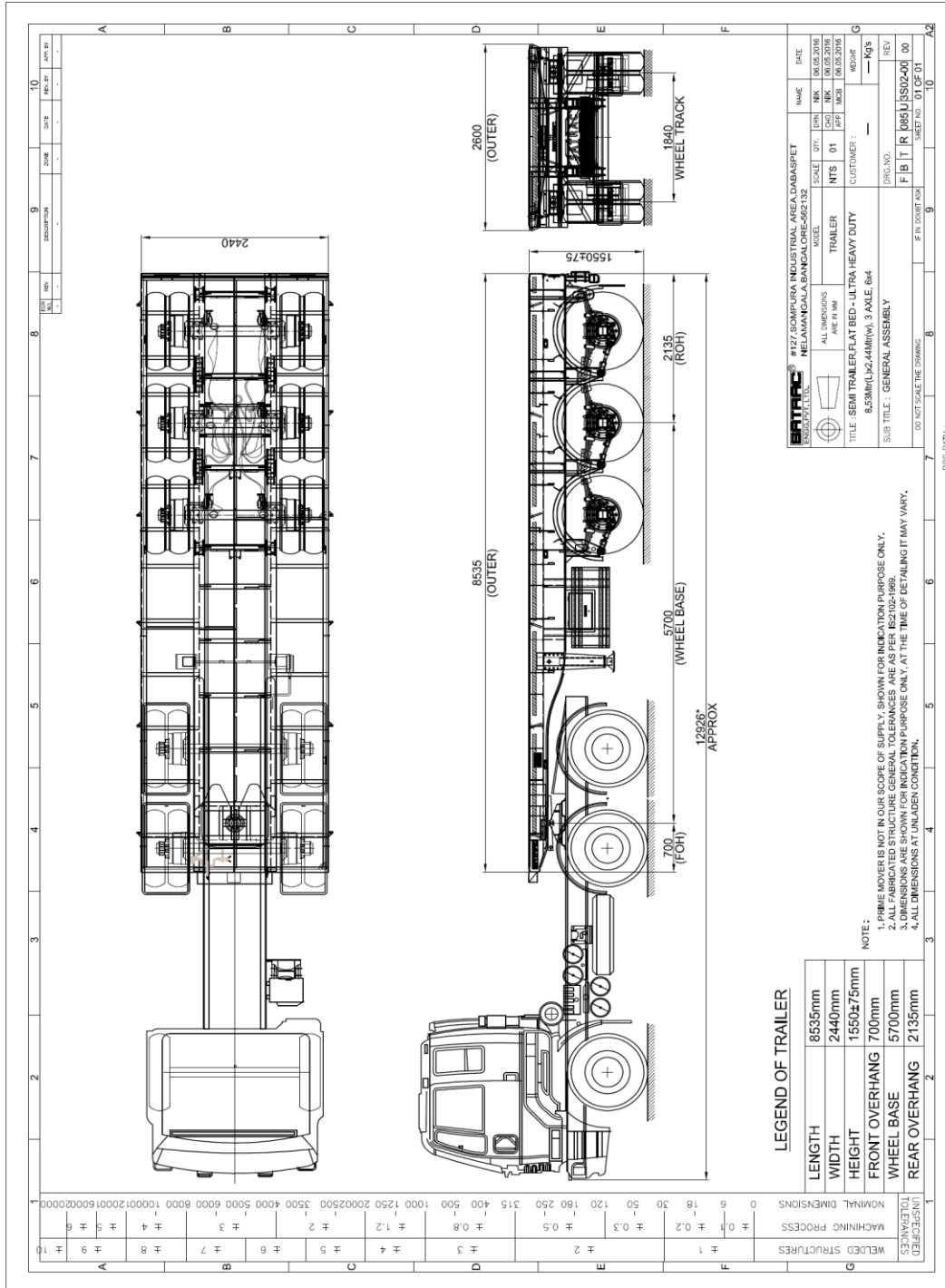


GENERAL SPECIFICATION:
MODEL- SATRAC Super Hauler- Ultra Heavy Duty
TYPE- Three Axle Flat Bed Trailer- 8.5 Mtr.
GROSS VECHICLE WEIGHT (GVW) – 49.2 Tons*.
UNLADEN WEIGHT- 8.75 Tons*.
PAY LOAD- 33.8 Tons*.

*When coupled with suitable prime mover. Weights mentioned are general & actual may vary from model to model. (Pl check during ordering).



ITEM	DESCRIPTION
KINGPIN	50.8 MM (2") / 89MM (3.5") as per IS 6763(Part I) – Boltable Type.
MAIN CHASSIS	Formed I Beam - 16 / 12 / 20 – Ladder type construction, Made with high strength steel-BSK46 with inner cross members providing maximum torisonal stability.
PLATFORM	Super structure made with ISMC 250 member & heavy duty outer cross member supports. Platform is covered by 8 MM Ckd sheet.
SUSPENSION	Tridem Heavy Duty multi leaf free ended laminated leaf spring.
AXLES	Round / square beam heavy duty axles – 3Nos.
BRAKES	Dual line air brakes with relay emergency, Air reservoir & suitable brake chambers. ABS will be optional extras.
TYRES	<p>Tyres: – Nylon 10.00 x 20 / 11.00 x 20 - 12 No's.</p> <p>Disc: – 7.50 x20 /8.00 x 20 – 12 No's.</p> <p>Optional: - Radial Tyres - 10.00R20 / 11.00R20 - 12 No's. Tubeless Tyres & Discs, Aluminum Disc.</p>
LANDING LEGS	Two speed landing legs at the front of the trailer – 1 Set.
ELECTRICAL	24V, 7Core socket, Lights as per AIS-113 standard.
GRIT BLASTING & PAINTING	Grit Blasting as per SA 2.5 standard, to clean rust & mill scale. Two coats of metal primer with 40 microns (DFT) & Final two coats of Enamel paint with 40 microns (DFT).
STANDARD ACCESSORIES	Steel Mudguard, Spare wheel carrier, Tool box etc. SUPD & RUPD as per AIS 113 standard.

BRAND NAMES OF BOUGHT OUT ITEMS

<u>SL.NO</u>	<u>PARTICULARS</u>	<u>BRAND/MANUFACTURER</u>
1	CHASSIS STEEL	JSW, TATA, ESSAR, BSK 46 / EQVT.
2	M.S.SHEETS	JSW, TATA, ESSAR / EQVT.
3	FRAME WORK STEEL	SAIL / EQVT, IS 2062.
4	KING PIN	JOST, YORK, FUWA.
5	AXLE	FUWA, YORK, BPW.
6	SUSPENSION ASSEMBLY & LEAF SPRINGS	FUWA, YORK, BPW.
7	BRAKE ACCESSORIES / PNEUMATIC	WABCO, HALDEX, KNORR BREMSE.
8	PNEUMATIC HOSES & ADAPTORS	WABCO, GATES, POLYHOSE.
9	PAINTS	ASIAN, NEROLAC, BERGER, AKZONOBEL/EQVT.
10	WHEEL RIMS	WHEELS INDIA, YORK, FUWA, EQVT.
11	FASTENERS	TVS, UNBRAKO, LPS.
12	TYRES	JK, CEAT.

Note: - In view of continuous development, design improvements & availability SATRAC reserves to right to change Design & specifications without notice

OPTIONAL EXTRAS

- **Trailer ABS/EBS system – Wabco / Haldex/ Knorr Bremse Make.**
- **Radial Tyres.**
- **Tubeless Tyres & Discs, Aluminum Disc.**
- **Polyurethane Painting.**
- **Zinc Galvanizing.**