

GENERAL SPECIFICATION:

MODEL- SATRAC Super Hauler- Regular Duty

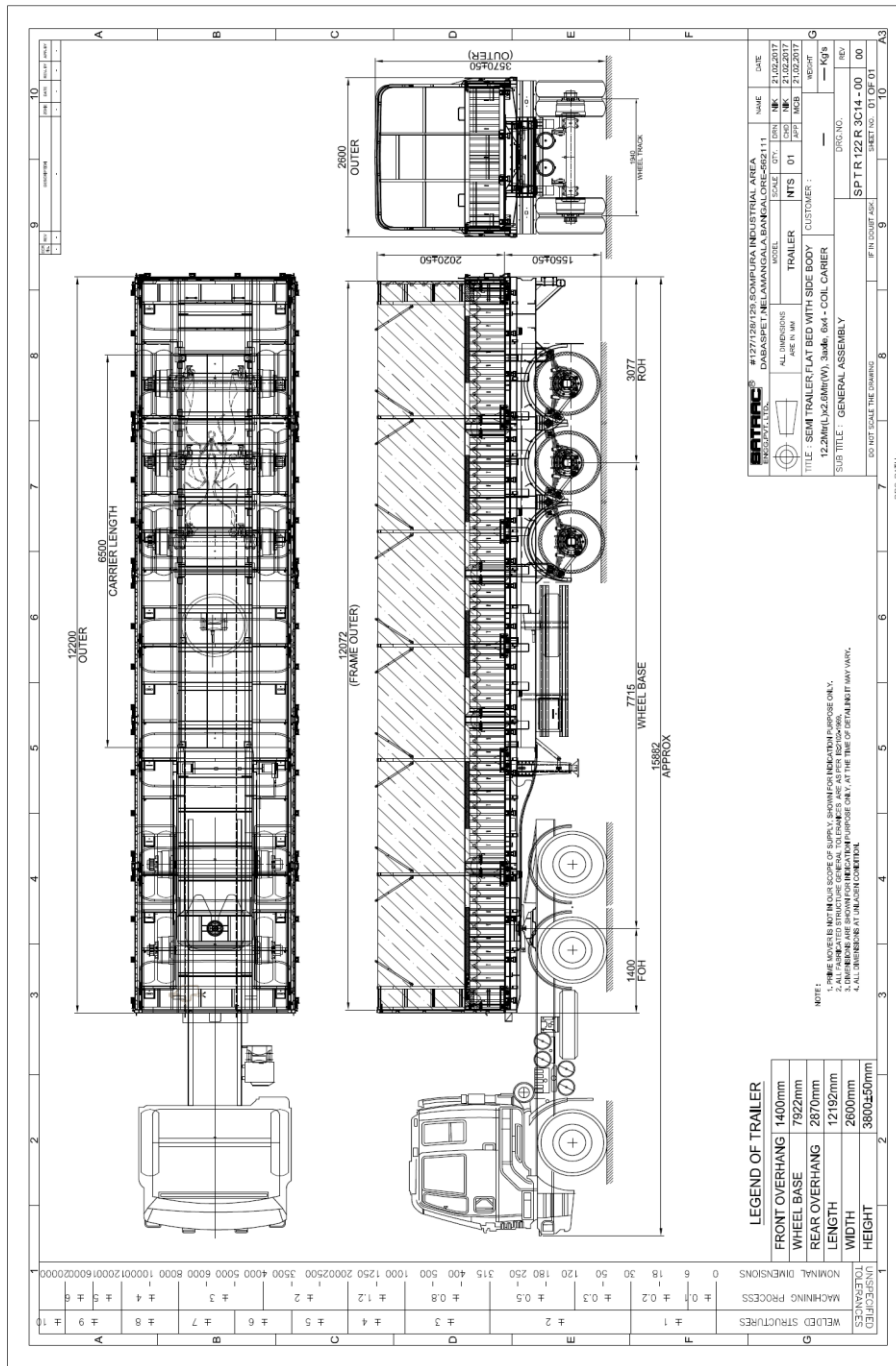
TYPE- Three Axle, Coil Carrier with Sliding Canopy - 12.2 Mtr.

GROSS VECHICLE WEIGHT (GVW) – 49.2 Tons*

UNLADEN WEIGHT- 9.5 Tons*

PAYLOAD – 32.3Tons*

*When coupled with suitable prime mover. Weights mentioned are general & actual may vary from model to model. (PI check during ordering)



ITEM	DESCRIPTION
KINGPIN	50.8 MM (2")/89MM (3.5") as per IS 6763(Part I) – Boltable Type.
MAIN CHASSIS	Formed I Beam - 12 / 8 / 16 – Ladder type construction, Made with high strength steel-BSK46 with inner cross members providing maximum torisonal stability.
PLATFORM	Super structure made with ISMC 150/125/100 member & heavy duty outer cross member supports. Platform is covered by 3 MM Ckd sheet. For coil application, between the beams having tapered section which is covered by 4mm Ckd sheet. Beside the tapered section having coil holding with locking facility.
SLIDING CANOPY	Entire sliding canopy constructed made with MS/Aluminum tube & pipes With Suitable Tarpaulin Arrangement.
SUSPENSION	Tridem Heavy Duty multi leaf free ended laminated leaf spring.
AXLES	Round / square beam heavy duty axles – 3Nos.
BRAKES	Dual line air brakes with relay emergency, Air reservoir & suitable brake chambers. ABS will be optional extras.
TYRES	Tyres: - Nylon 10.00 x 20 / 11.00 x 20 - 12 No's. Disc: - 7.50 x20 /8.00 x 20 – 12 No's. Optional: - Radial Tyres - 10.00R20 / 11.00R20 - 12 No's. Tubeless Tyres & Discs, Aluminum Disc.
LANDING LEGS	Two speed landing legs at the front of the trailer – 1 Set.
ELECTRICAL	24V, 7Core socket, Lights as per AIS-113 standard.
GRIT BLASTING & PAINTING	Grit Blasting as per SA 2.5 standard, to clean rust & mill scale. Two coats of metal primer with 40 microns (DFT) & Final two coats of Enamel paint with 40 microns (DFT).
CONTAINER LOCKS	Container Twist locks – 12 No's for 20 Ft-2 Containers / 40 Ft One container / 20 Ft One container (Centre)
STANDARD ACCESSORIES	ABS Mudguard, Spare wheel carrier, Tool box etc. SUPD & RUPD as per AIS 113 standard.

BRAND NAMES OF BOUGHT OUT ITEMS

<u>SL.NO</u>	<u>PARTICULARS</u>	<u>BRAND/MANUFACTURER</u>
1	CHASSIS STEEL	JSW, TATA, ESSAR, BSK 46 / EQVT.
2	M.S.SHEETS	JSW, TATA, ESSAR / EQVT.
3	FRAME WORK STEEL	SAIL / EQVT, IS 2062.
4	KING PIN	JOST, YORK, FUWA.
5	AXLE	FUWA, YORK, BPW.
6	SUSPENSION ASSEMBLY & LEAF SPRINGS	FUWA, YORK, BPW.
7	BRAKE ACCESSORIES / PNEUMATIC	WABCO, HALDEX, KNORR BREMSE.
8	PNEUMATIC HOSES & ADAPTORS	WABCO, GATES, POLYHOSE.
9	PAINTS	ASIAN, NEROLAC, BERGER, AKZONOBEL/EQVT.
10	WHEEL RIMS	WHEELS INDIA, YORK, FUWA, EQVT.
11	FASTENERS	TVS, UNBRAKO, LPS.
12	TYRES	JK, CEAT.

Note: - In view of continuous development, design improvements & availability SATRAC reserves to right to change Design & specifications without notice

OPTIONAL EXTRAS

- **Trailer ABS/EBS system – Wabco / Haldex/ Knorr Bremse Make.**
- **Radial Tyres.**
- **Tubeless Tyres & Discs, Aluminum Disc.**
- **Polyurethane Painting.**
- **Zinc Galvanizing.**