

## GENERAL SPECIFICATION:

**MODEL- SATRAC Super Hauler- Regular Duty**

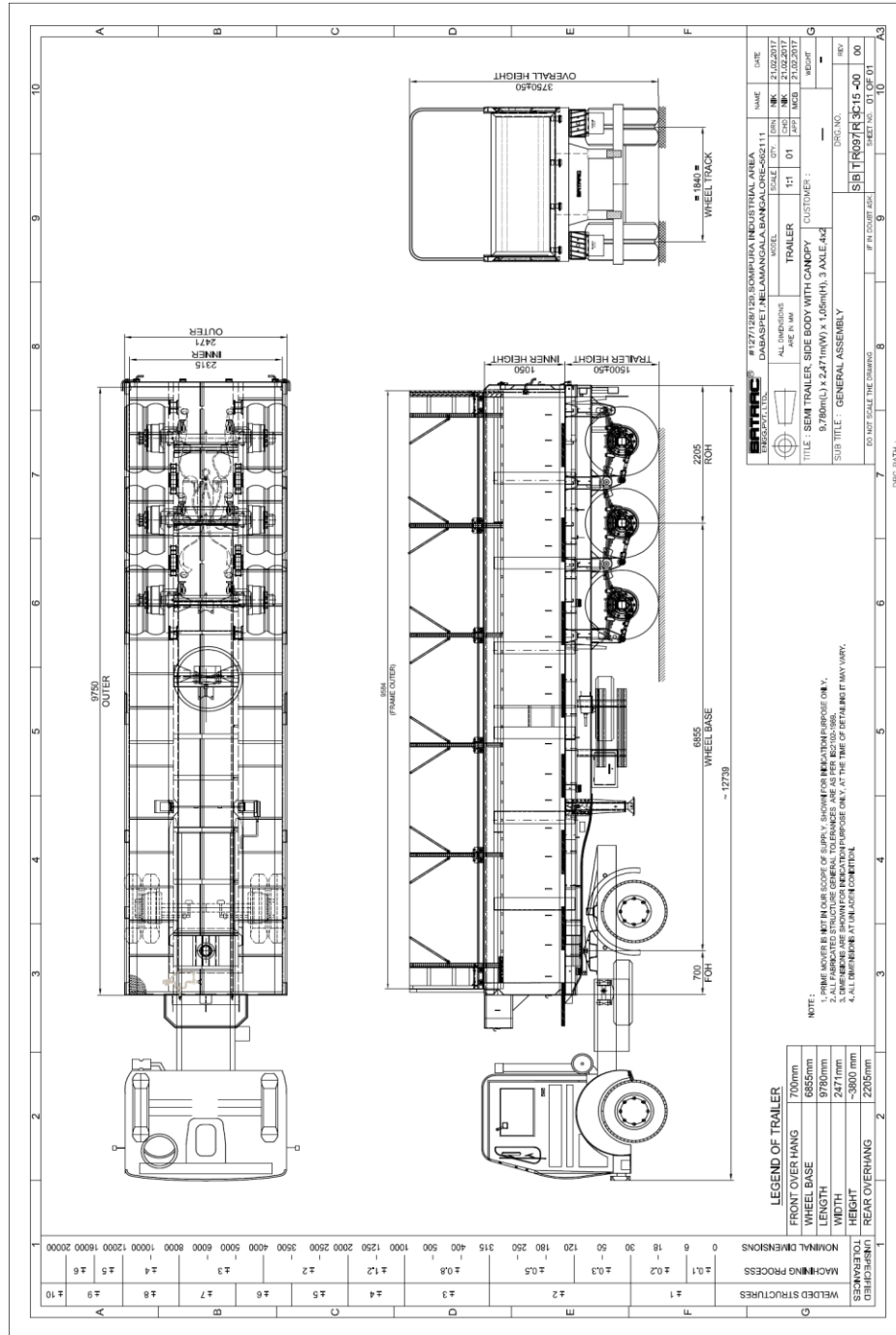
**TYPE- Three Axle, FSD Coil Carrier with Sliding Canopy – 9.7 Mtr.**

**GROSS VECHICLE WEIGHT (GVW) – 40 Tons\***

**UNLADEN WEIGHT- 8.25 Tons\***

**PAYLOAD – 25.85Tons\***

\*When coupled with suitable prime mover. Weights mentioned are general & actual may vary from model to model. (PI check during ordering).



<b>ITEM</b>	<b>DESCRIPTION</b>
<b>KINGPIN</b>	50.8 MM (2")/89MM (3.5") as per IS 6763(Part I) – Boltable Type.
<b>MAIN CHASSIS</b>	Formed I Beam - 12 / 8 / 12 – Ladder type construction, Made with high strength steel-BSK46 with inner cross members providing maximum torisonal stability.
<b>PLATFORM</b>	Super structure made with ISMB 250 / ISMC 125 member & heavy duty outer cross member supports. Platform is covered by <b>4 MM</b> HR sheet.
<b>SIDE BODY</b>	3mm Thk Rigid side panels, Reinforced to platform. Rear opening Hinged door.
<b>SLIDING CANOPY</b>	Entire sliding canopy constructed made with MS/Aluminum tube & pipes With Suitable Tarpaulin Arrangement.
<b>SUSPENSION</b>	Tridem Heavy Duty multi leaf free ended laminated leaf spring.
<b>AXLES</b>	Round / square beam heavy duty axles – 3Nos.
<b>BRAKES</b>	Dual line air brakes with relay emergency, Air reservoir & suitable brake chambers. ABS will be optional extras.
<b>TYRES</b>	<p><b>Tyres:</b> - Nylon 10.00 x 20 / 11.00 x 20 - 12 No's.</p> <p><b>Disc:</b> - 7.50 x20 /8.00 x 20 – 12 No's.</p> <p><b>Optional:</b> - Radial Tyres - 10.00R20 / 11.00R20 - 12 No's. Tubeless Tyres &amp; Discs, Aluminum Disc.</p>
<b>LANDING LEGS</b>	Two speed landing legs at the front of the trailer – 1 Set.
<b>ELECTRICAL</b>	24V, 7Core socket, Lights as per AIS-113 standard.
<b>GRIT BLASTING &amp; PAINTING</b>	Grit Blasting as per SA 2.5 standard, to clean rust & mill scale. Two coats of metal primer with 40 microns (DFT) & Final two coats of Enamel paint with 40 microns (DFT).
<b>STANDARD ACCESSORIES</b>	Mudguard, Spare wheel carrier, Tool box etc. SUPD & RUPD as per AIS 113 standard.

## **BRAND NAMES OF BOUGHT OUT ITEMS**

<b>SL.NO</b>	<b>PARTICULARS</b>	<b>BRAND/MANUFACTURER</b>
1	CHASSIS STEEL	JSW, TATA, ESSAR, BSK 46 / EQVT.
2	M.S.SHEETS	JSW, TATA, ESSAR / EQVT.
3	FRAME WORK STEEL	SAIL / EQVT, IS 2062.
4	KING PIN	JOST, YORK, FUWA.
5	AXLE	FUWA, YORK, BPW.
6	SUSPENSION ASSEMBLY & LEAF SPRINGS	FUWA, YORK, BPW.
7	BRAKE ACCESSORIES / PNEUMATIC	WABCO, HALDEX, KNORR BREMSE.
8	PNEUMATIC HOSES & ADAPTORS	WABCO, GATES, POLYHOSE.
9	PAINTS	ASIAN, NEROLAC, BERGER, AKZONOBEL/EQVT.
10	WHEEL RIMS	WHEELS INDIA, YORK, FUWA, EQVT.
11	FASTENERS	TVS, UNBRAKO, LPS.
12	TYRES	JK, CEAT.

**Note:** - In view of continuous development, design improvements & availability SATRAC reserves to right to change Design & specifications without notice

## **OPTIONAL EXTRAS**

- **Trailer ABS/EBS system – Wabco / Haldex/ Knorr Bremse Make.**
- **Radial Tyres.**
- **Tubeless Tyres & Discs, Aluminum Disc.**
- **Polyurethane Painting.**
- **Zinc Galvanizing.**