

GENERAL SPECIFICATION:

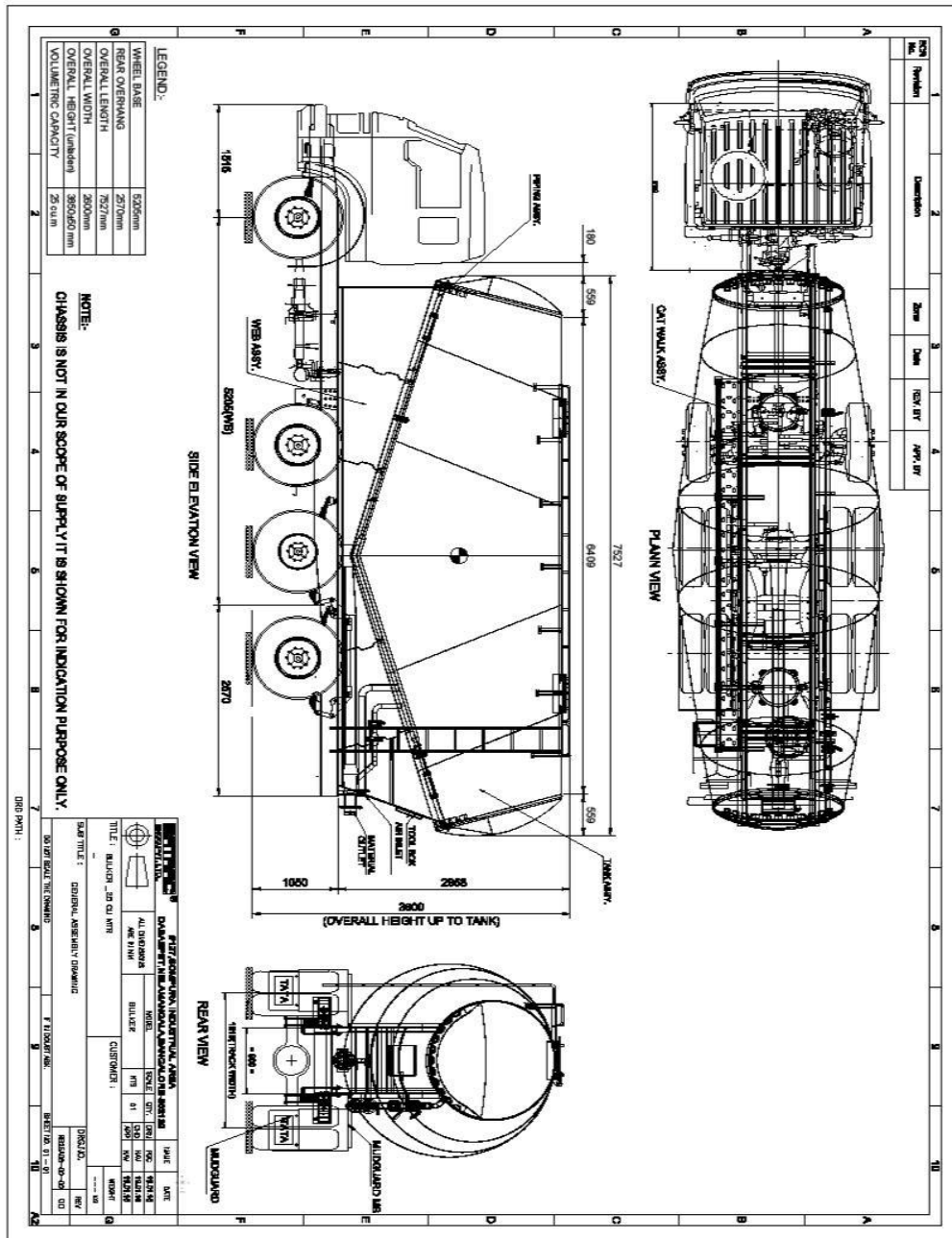
MODEL - RIGID BULKER.

CAPACITY - 25 Cu Mtr.

GROSS VEHICLE WEIGHT (GVW)- 25Tons

BULKER WEIGHT - 3.2 Ton.*

*When coupled with suitable chassis, Weights mentioned are as per RTO Rules & actual may vary from model to model.



TECHNICAL SPECIFICATIONS:

ITEM	SIZE	DESCRIPTION
MAIN CHASSIS	5 mm	The structure shall ensure maximum load bearing capacity with low unladen weight. Construction will ensure maximum torsional stability.
TANK	25 Cu Mtr	Thickness: Shell - 4 MM ST 52 / Dish End -5MM –ST 52 Certification: Indian Standard is 2825 1959 Class-3 as applicable to as 1210 Class 3 unfired pressure Vessels. Discharge: Rear via Bottom Loading: 2 *450mm diameter hatches Designed max working pressure: 165 to 180 kpa Text Pressure min: 248 to 270 kpa Pressure gauge: 100 mm diameter 0-10 Kg/Cm2 fluid intersec Relief Valve: A relief valve will be installed in the vessel in accordance with IS – 2526 Class 3 requirements.
ELECTRICAL		Two-pole 24 V wiring will be provided with suitable conduit piping with a 5-pin socket to receive and transmit electric power from the prime mover. Signaling systems indicating parking, direction blinkers and all systems as stipulated by the Road Transport authority will be provided.
PAINTING SCHEME		Two coats of metal primers will be applied. The dry film thickness (DFT) will not be less than 30 microns. Final two coats of not less than 40 microns (DFT) of enamel color paint will be applied. Standard quality paints and primers will be procured from approved manufacturers. The inner surfaces of box sections will be cleaned and painted with zinc rich epoxy primer (by Brush/spray) to a thickness of 65 microns DFT before closing the section.
STANDARD ACCESSORIES		Parking lights, indicator lamps, sidelights, reflectors, toolbox etc. will be provided.

BRAND NAMES OF BOUGHT OUT ITEMS

SL.NO	PARTICULARS	BRAND/MANUFACTURER
1	CHASSIS STEEL	JSW /TATA/ESSAR – IS 2062 EQVT
2	FRAME WORK STEEL	JSW / TATA/ESSAR – IS 2062 EQVT
3	M.S.SHEETS	JSW / TATA/ESSAR – IS 2062 EQVT
4.	PNEUMATIC HOSES	GATES, POLYHOSE.
5.	PAINTS	ASIAN, NEROLAC,BERGER.
6.	FASTENERS	TVS, UNBRAKO, LPS.
7.	ALUMINIUM PROFILE	HINDALCO –GRADE – H30
8.	VALVES	L & T – ADCO
9.	HOSES	GATES-USA.
10.	AEREATION HOSE	POLYSTER YARN –IMP.
11.	COMPRESSOR	Hori Wing - EQVT

Note:-In view of continuous development, design improvements & availability Satrac reserves to right to change Design & specifications without notice. Please check during ordering.