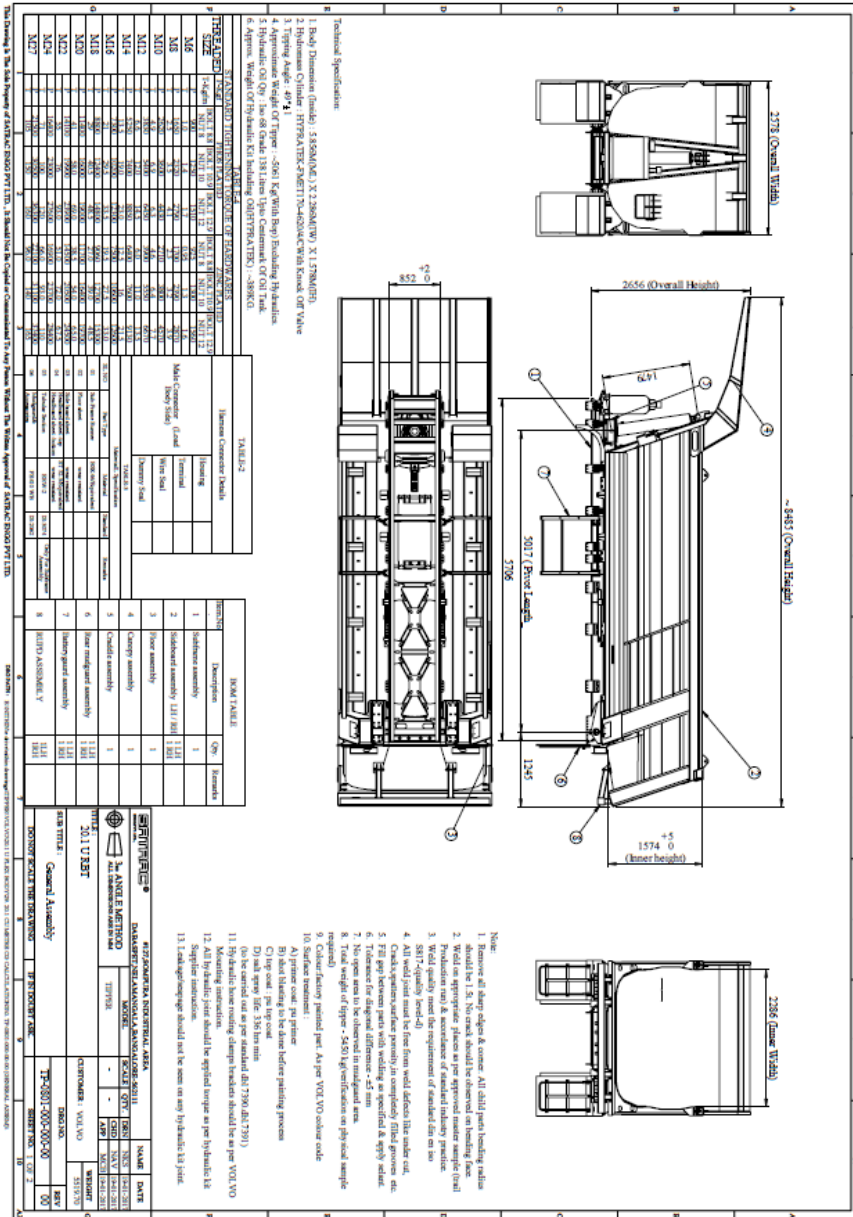




# GENERAL SPECIFICATIONS:

**MODEL : TIPPER**  
**CAPACITY : 20.1 Cu Mtr.**  
**TYPE : ROCK BODY – U Shape**  
**TIPPER WEIGHT : 5.061 Ton.\***

\*Weights mentioned are general & may vary from model to model. (Pl check during ordering)



## **TECHNICAL SPECIFICATIONS:**

<b>ITEM</b>	<b>SIZE</b>	<b>DESCRIPTION</b>
<b>SUBFRAME</b>		8 mm folded channel of High yield steel – BSK 46/ Eqvt with guaranteed yield strength of + 460 MPA. The sub frame is fastened to the chassis by means of attachment plates & spring mounted retainers.
<b>PLATFORM</b>		The platform will be constructed with sandwich of HARDOX 450 , 10 mm thick with guaranteed yield strength of 1200 MPA. Platform will be reinforced with pivot beam of 16mm thk BSK 46 with guaranteed yield strength of 460 MPA & Rear beam of HARDOX 450, 6mm thk with guaranteed yield strength of 1200 MPA.
<b>BODY PANELS</b>		Side board sheet will be made of 6mm thk HARDOX 450 & head board panels will be made of 6mm thk HARDOX 450 with guaranteed yield strength of 1200 MPA duly strengthened and reinforced with stiffeners.
<b>HYDRAULIC TIPPING SYSTEM</b>		4 Stage cylinder, Tipper Valve HYPRATEK-FMET170-4620/4/C strokelength Cabin fitted air control valve (Pneumatically controlled ) for PTO engaging , Tipper Valve, 80 ltrs capacity oil tank with breather , return line filter, all hoses & fittings, Body clamp Hypratek ,HYFIX, Hydraulic pump –gear pump. Shell /Castrol hydraulic oil.
<b>PAINTING SCHEME</b>		Main structure –Shot blasted & All surfaces of the fabricated structure will be completely free from oil, Grease, dirt or other matter & two coats of metal primer will be applied. The Dry Film Thickness (DFT) will be not less than 30 microns. Final two Quotes of not less than 40 microns (DFT). Standard Quality Paints & Primers will be procured by approved manufacturers.
<b>STANDARD ACCESSORIES</b>		Indicator lamps brackets, Sidelights, Reflectors, Toolbox, Rope Hooks etc. will be provided.

## **BRAND NAMES OF BOUGHT OUT ITEMS :**

<b>SL.NO</b>	<b>PARTICULARS</b>	<b>BRAND/MANUFACTURER</b>
1	CHASSIS STEEL	TATA / JSW / ESSAR / ST-52-GRADE / EQVT
2	FRAME WORK STEEL	HARDOX/REAX/ EQVT
3	M.S.SHEETS	TATA / ESSAR /JSW / IS2062 / EQVT
4.	PAINTS	ASIAN, NEROLAC,BERGER.
5.	FASTENERS	TVS, UNBRAKO, LPS.
6.	HYDRAULIC KIT	HYPRATEK

**Note:**-In view of continuous development, design improvements & availability Satrac reserves to right to change Design & specifications without notice. Please check during ordering.