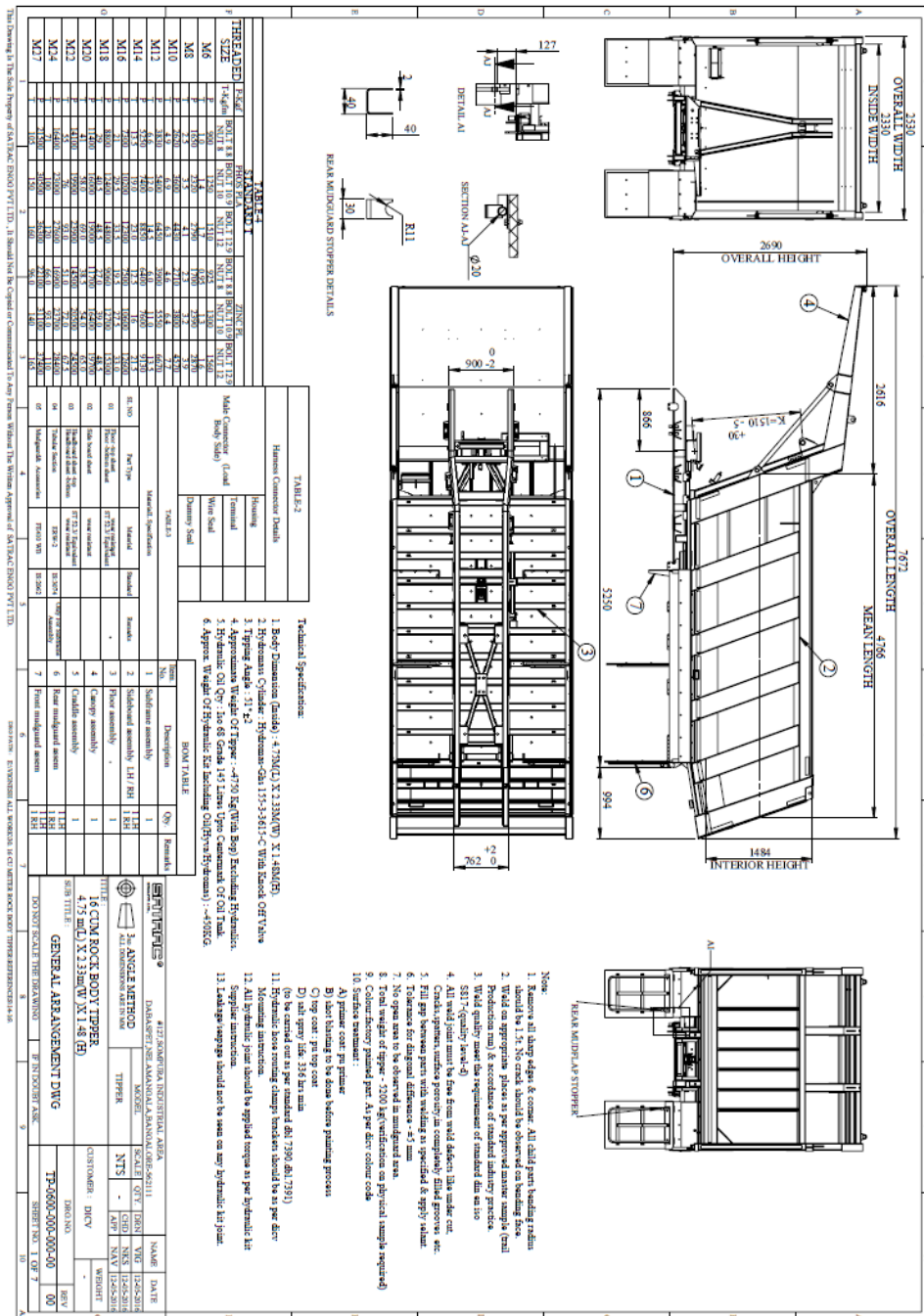


## GENERAL SPECIFICATIONS:

**MODEL : TIPPER**  
**CAPACITY : 16 Cu Mtr.**  
**TYPE : ROCK BODY**  
**TIPPER WEIGHT : 4.75 Ton.\***

\*Weights mentioned are general & may vary from model to model. (Pl check during ordering)



## TECHNICAL SPECIFICATIONS:

| ITEM                            | SIZE | DESCRIPTION  |
|---------------------------------|------|--|
| <b>SUBFRAME</b>                 |      | 8 mm folded channel of High yield steel – BSK 46/ Eqvt with guaranteed yield strength of 460 MPA. The sub frame is fastened to the chassis by means of attachment plates & spring mounted retainers  |
| <b>PLATFORM</b>                 |      | The platform will be constructed with sandwich of REAX 400 8 mm thick with guaranteed yield strength of 1000 MPA +50mm Wood+ MS 5mm thk -Equivalent to ST- 52 with guaranteed yield strength of 350 MPA duly strengthened and reinforced to the body runner, The entire platform will be covered by folded cross members and Rock breakers   |
| <b>BODY PANELS</b>              |      | Side & head board panels will be made of 5 thk HARDOX/REAX with guaranteed yield strength of 1000 MPA duly strengthened and reinforced with stiffeners   |
| <b>HYDRAULIC TIPPING SYSTEM</b> |      | 3 Stage cylinder, Tipper Valve Hydromas-Ghs 155-3-3615-C With Knock Off Valve Cabin fitted air control valve (Pneumatically controlled ) for PTO engaging , Tipper Valve, 135 ltrs capacity oil tank with breather , return line filter, all hoses & fittings, Body clamp Hypratek ,HYFIX, Hydraulic pump, gear pump, Shell /Castrol hydraulic oil.                                  |
| <b>PAINTING SCHEME</b>          |      | Main structure –Shot blasted & All surfaces of the fabricated structure will be completely free from oil, Grease, dirt or other matter & two coats of metal primer will be applied. The Dry Film Thickness (DFT) will be not less than 30 microns. Final two Quotes of not less than 40 microns (DFT). Standard Quality Paints & Primers will be procured by approved manufacturers. |
| <b>STANDARD ACCESSORIES</b>     |      | Indicator lamps brackets, Sidelights, Reflectors, Toolbox, Rope Hooks etc. will be provided.   |

### **BRAND NAMES OF BOUGHT OUT ITEMS :**

| SL.NO | PARTICULARS      | BRAND/MANUFACTURER                      |
|-------|------------------|---|
| 1     | CHASSIS STEEL    | TATA / JSW / ESSAR / ST-52-GRADE / EQVT |
| 2     | FRAME WORK STEEL | HARDOX/REAX/ EQVT                       |
| 3     | M.S.SHEETS       | TATA / ESSAR /JSW / IS2062 / EQVT       |
| 4.    | PAINTS           | ASIAN, NEROLAC,BERGER.                  |
| 5.    | FASTENERS        | TVS, UNBRAKO, LPS.                      |
| 6.    | HYDRAULIC KIT    | HYDROMAS                                |

**Note:-**In view of continuous development, design improvements & availability Satrac reserves to right to change Design & specifications without notice. Please check during ordering.